

SCHULANLAGE  
**BRUNNMATT**  
PLÄNE BAUPROJEKT

BATIMO AG ARCHITEKTEN SIA

Bauprojekt Oktober 2016

**BAUHERRSCHAFT:**

Baudepartement  
Gemeinde Kriens

**ARCHITEKT:**

Batimo AG Architekten SIA  
Strengelbacherstrasse 4d  
4800 Zofingen





**Situationsplan 1:500**

Bauprojekt  
**12013 Gesamtanierung und Erweiterung Schulanlage Brunnmatt**

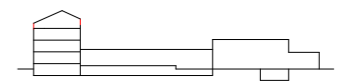
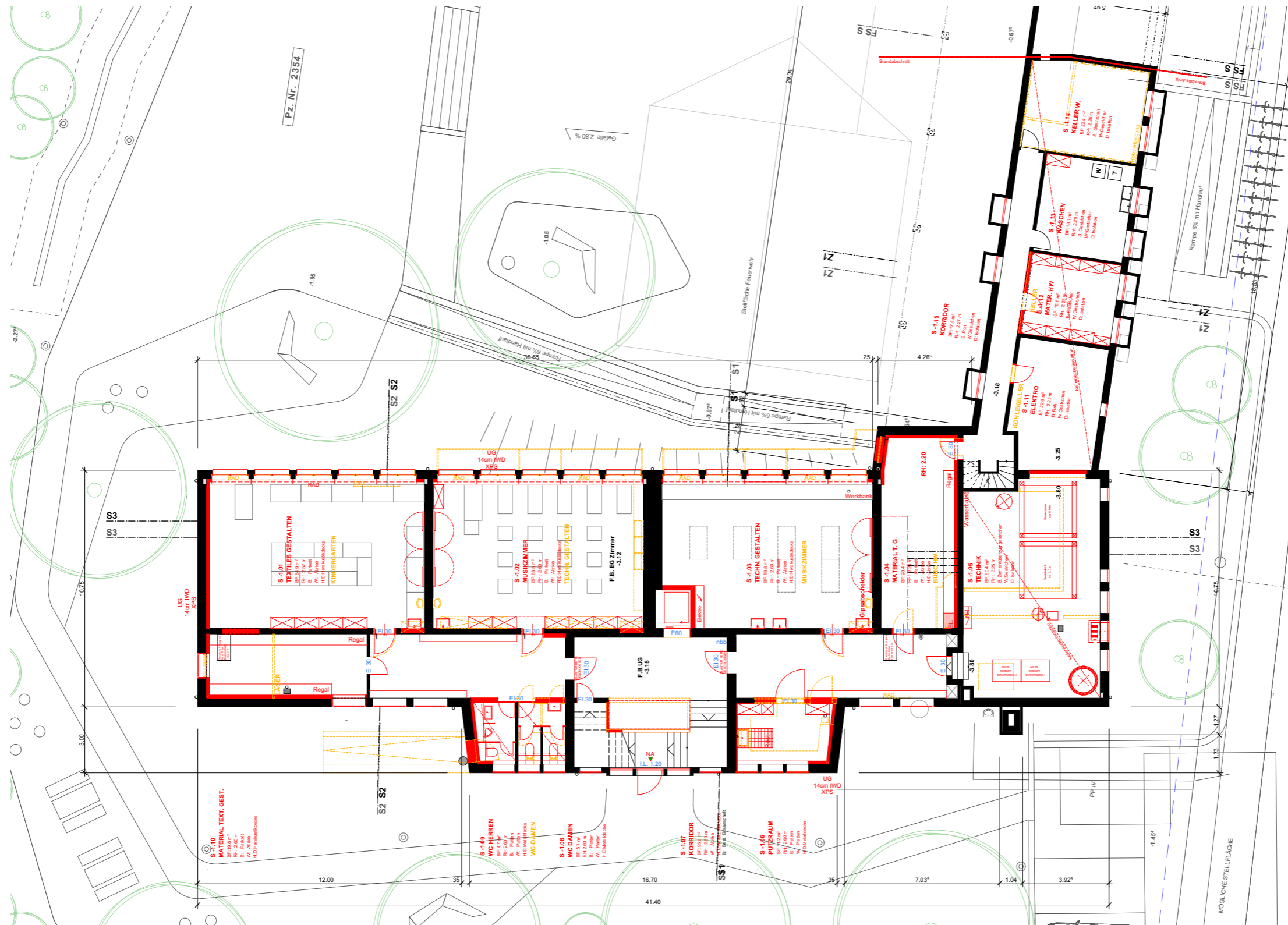
BAUHERRSCHAFT  
 Baudepartement Gemeinde Kriens

ARCHITEKT  
 Batimo AG | Strengelbacherstrasse 4d | 4800 Zofingen | 20.06.16\_RBa

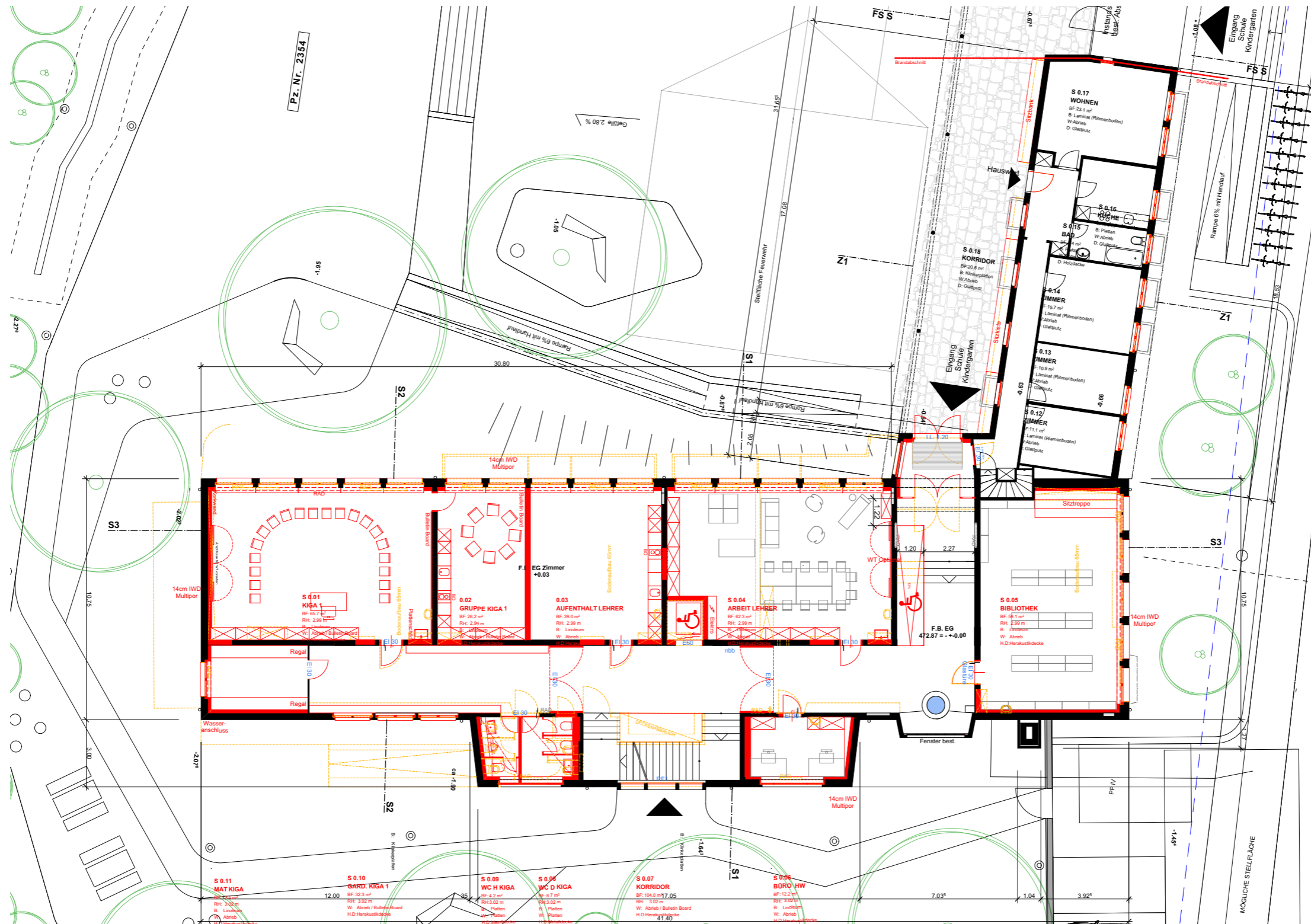
**\_0. Situationpläne**

**1:500**

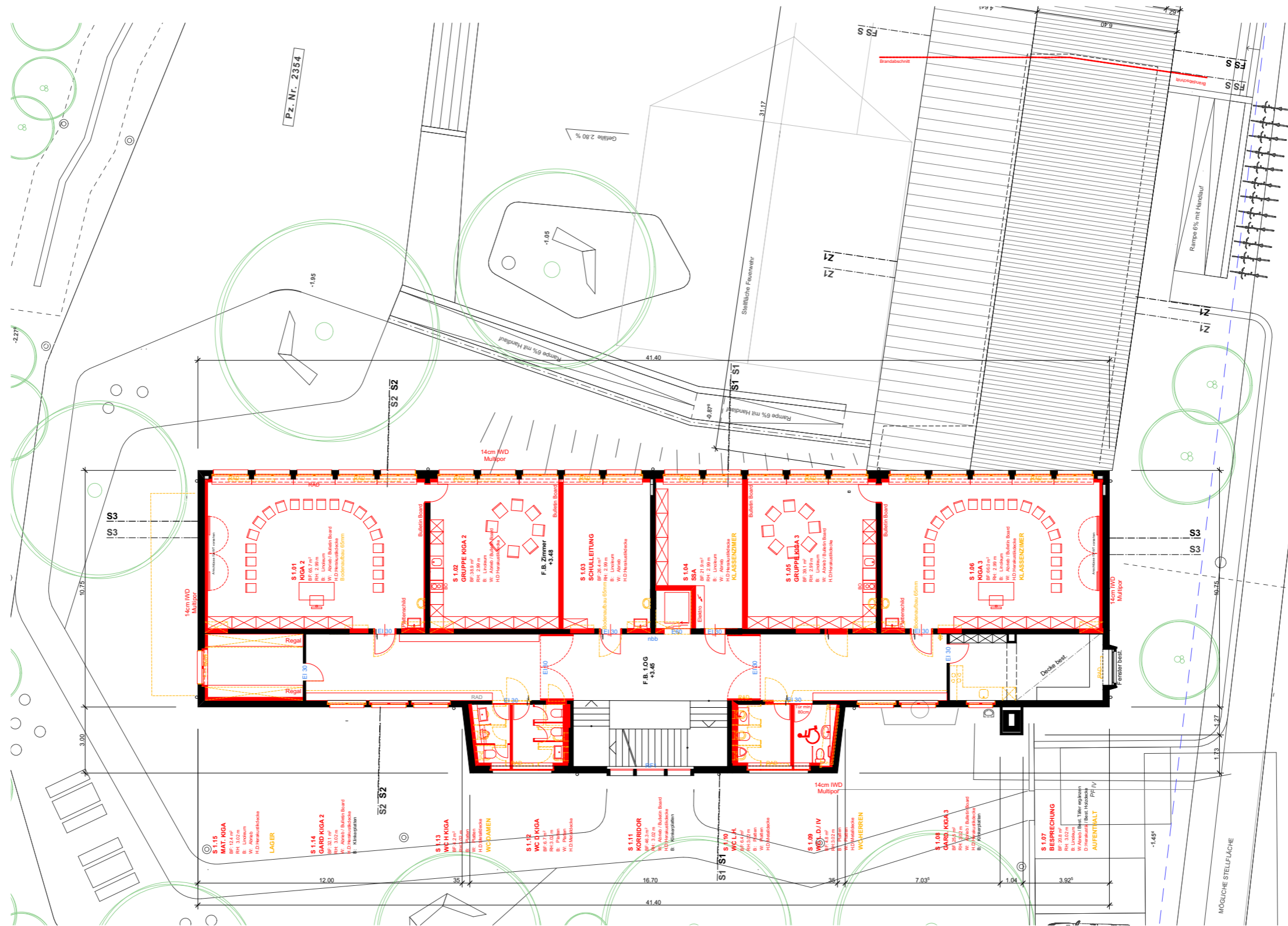


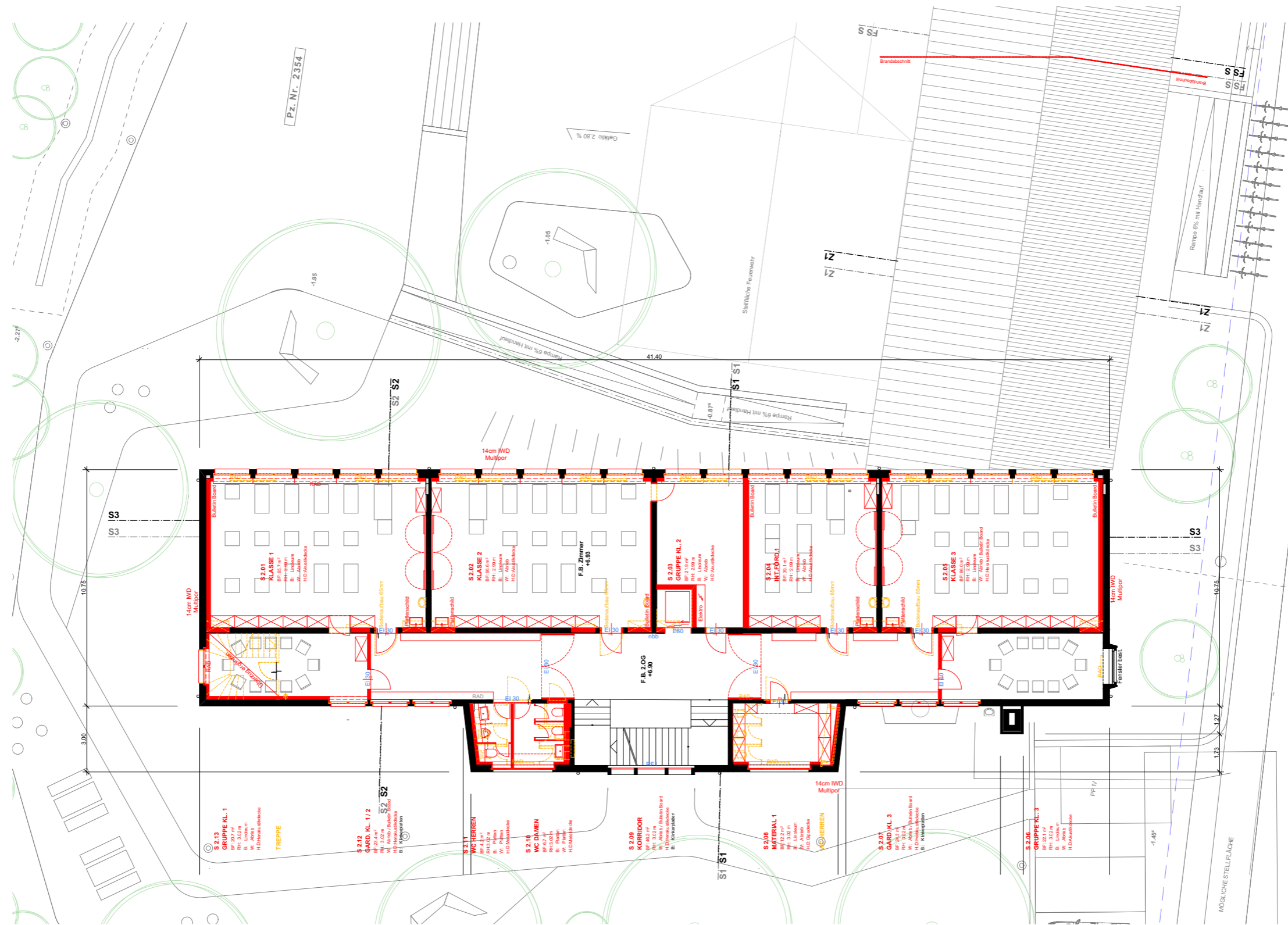






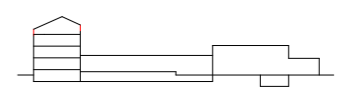
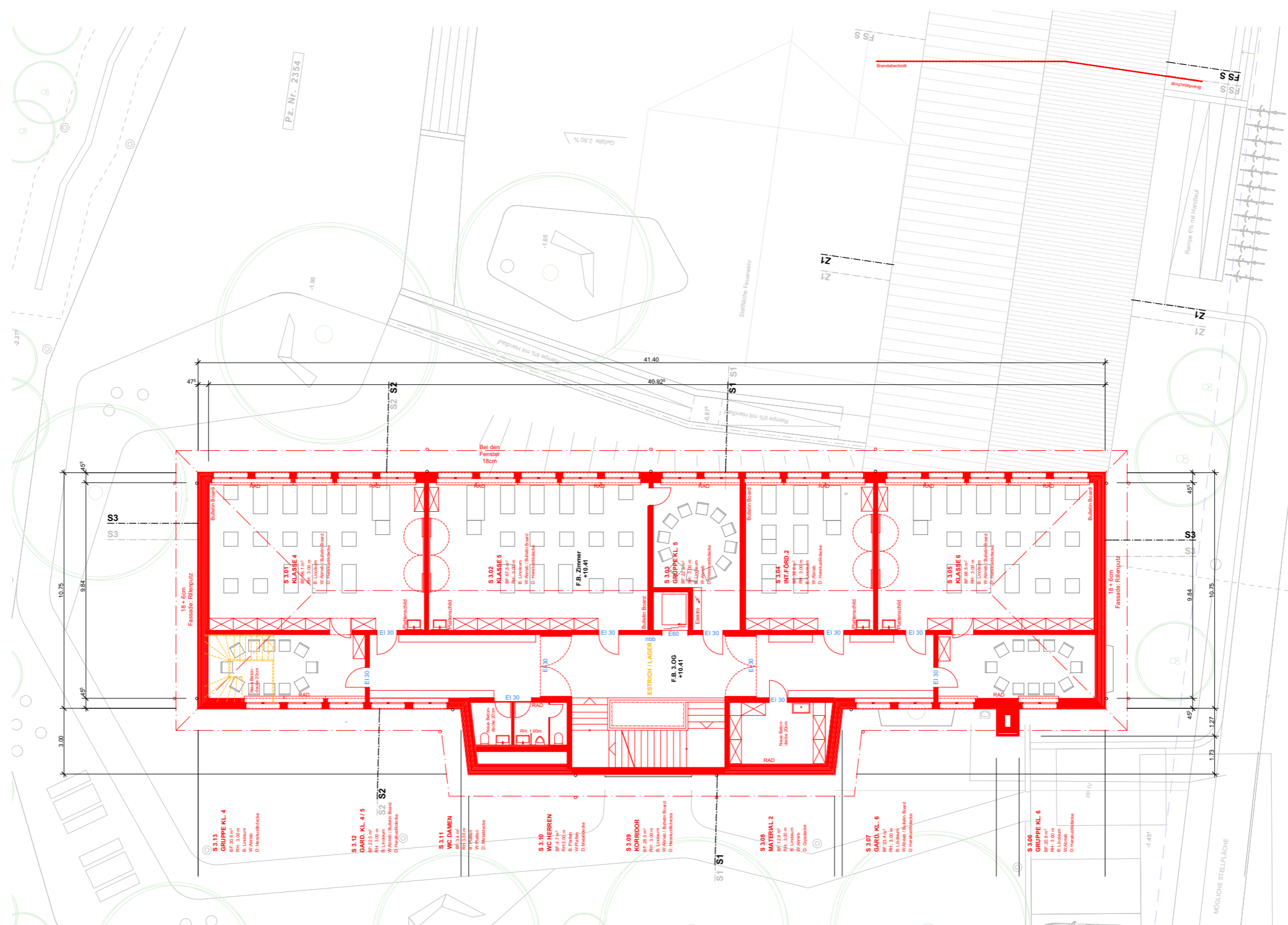




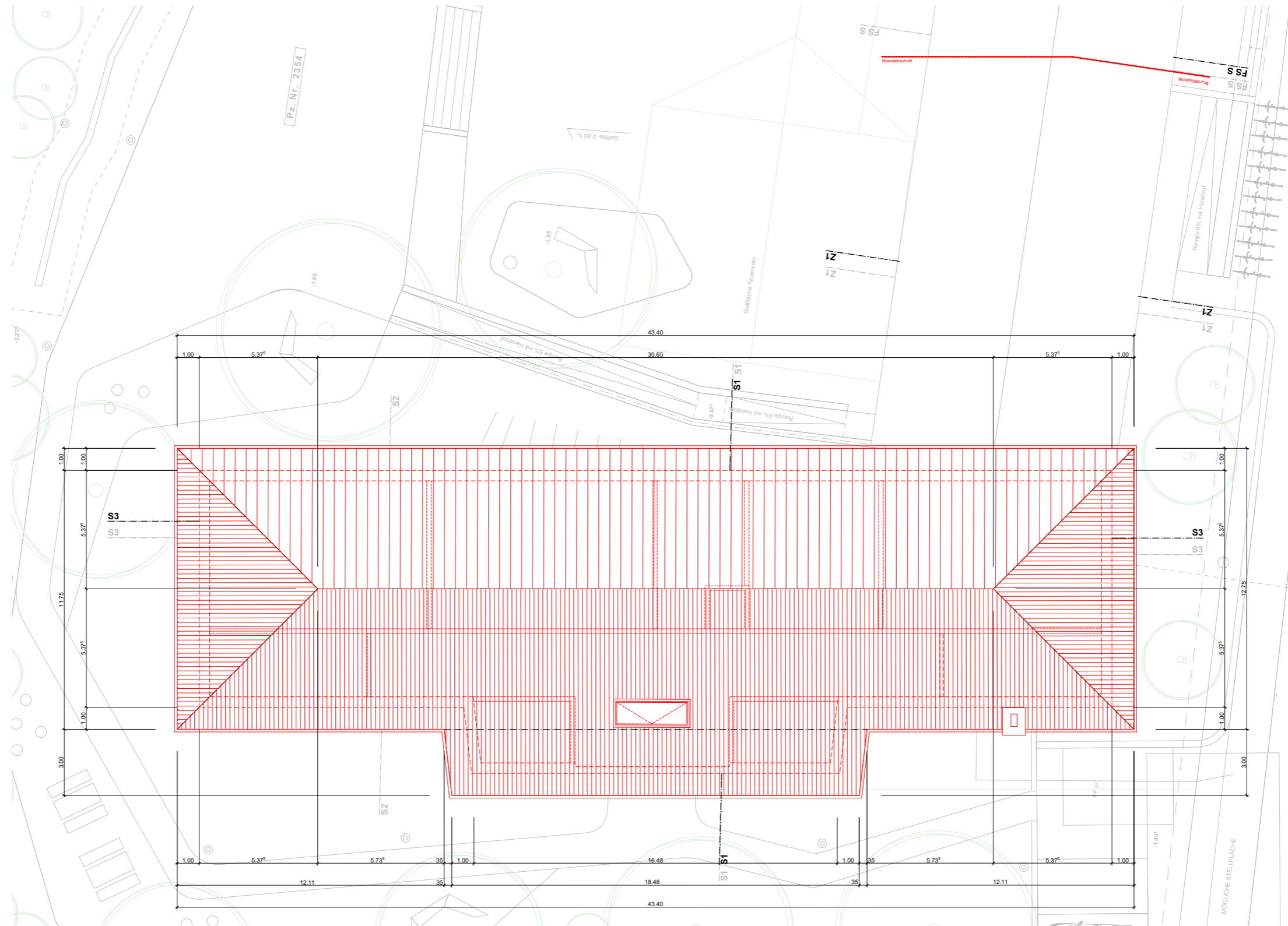


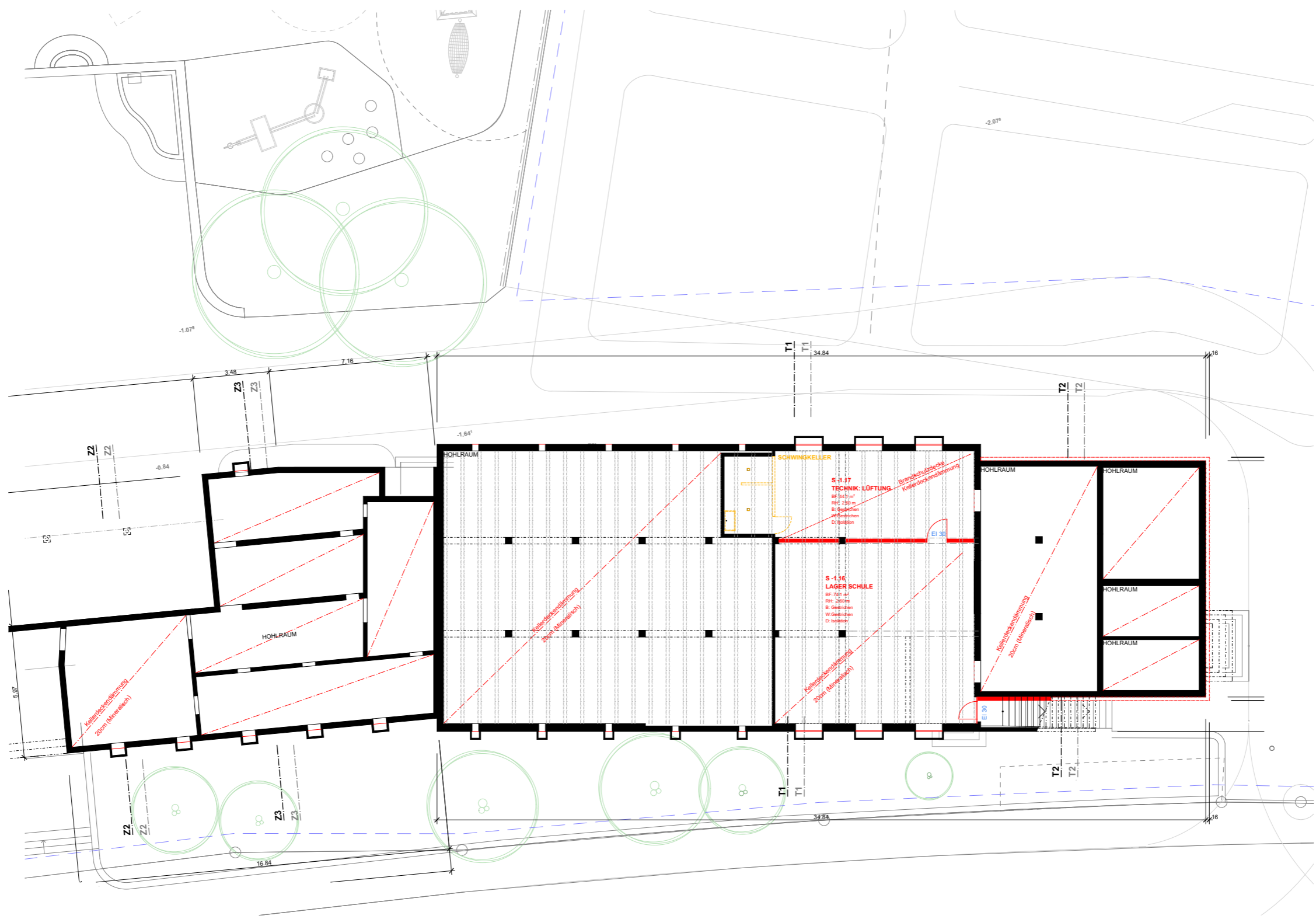
Pz. Nr. 2354

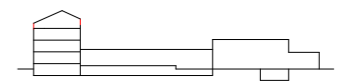
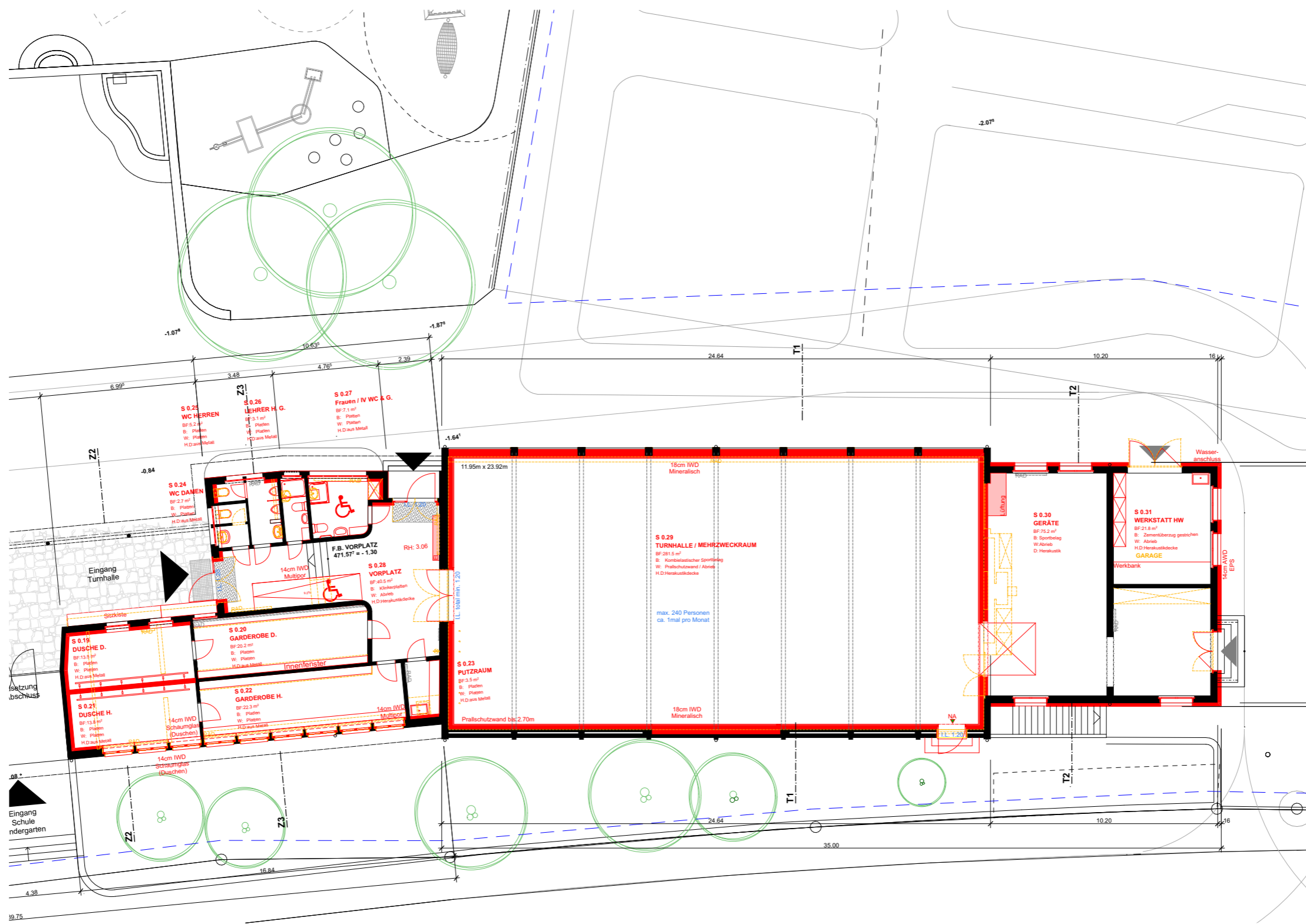




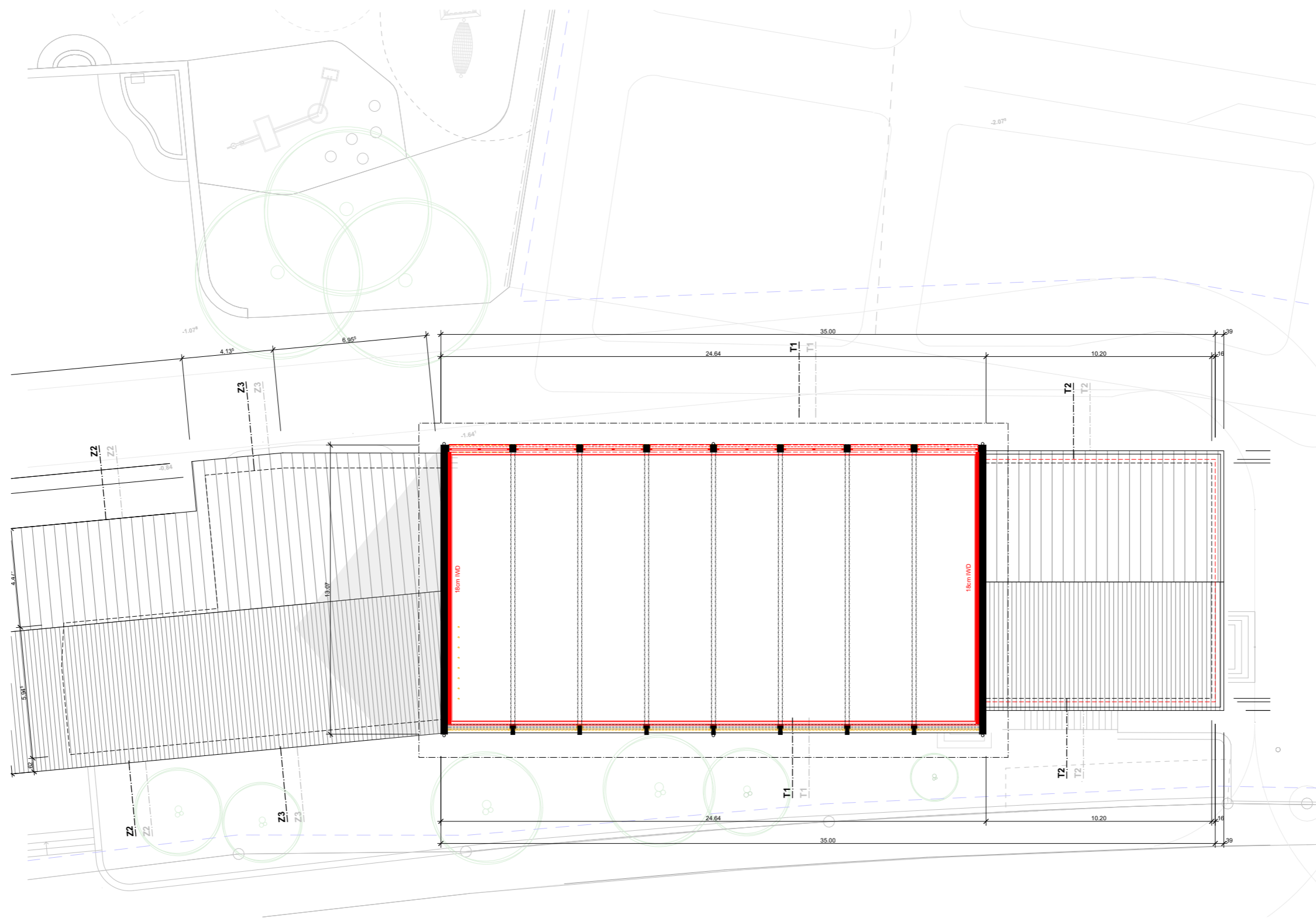


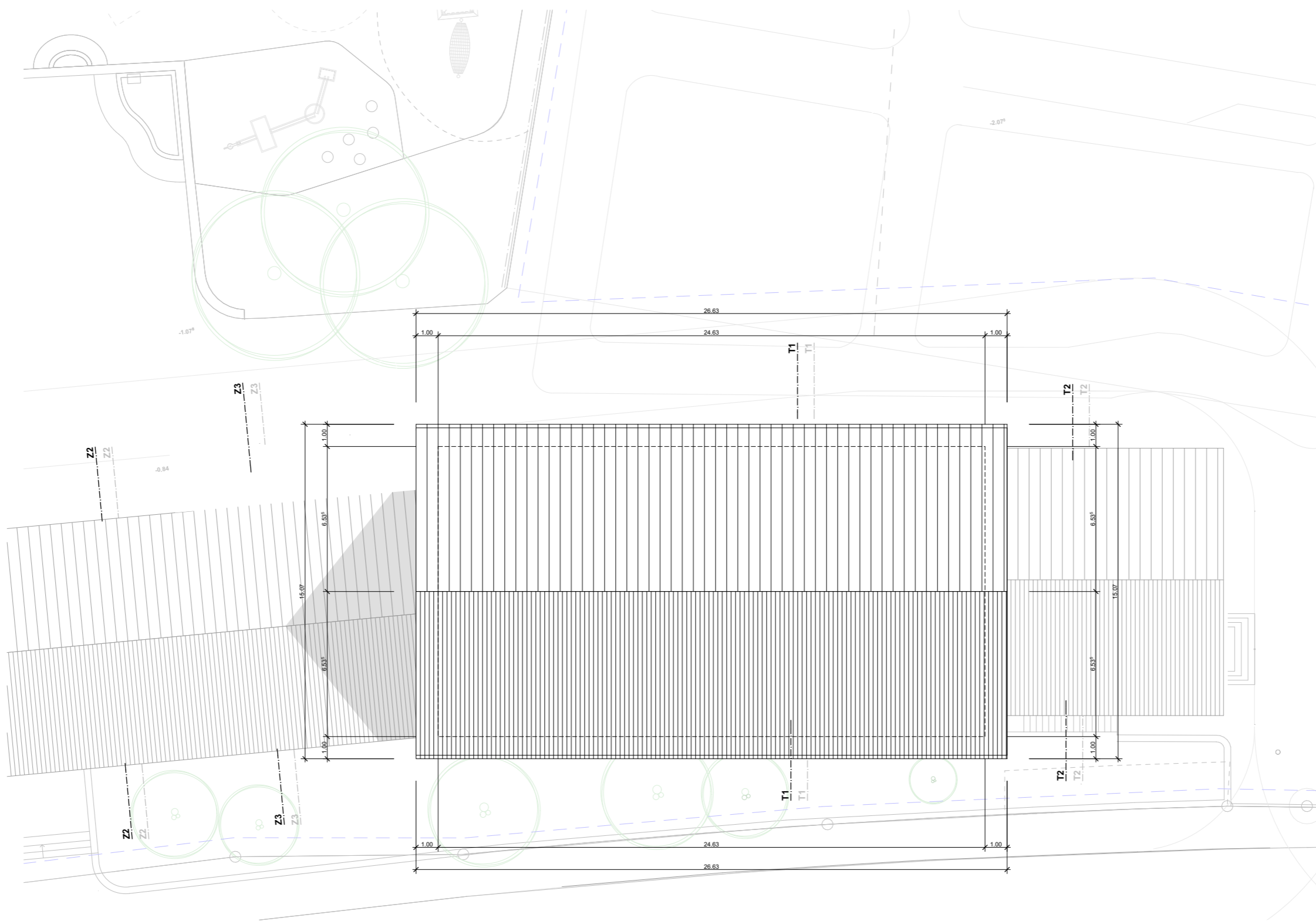


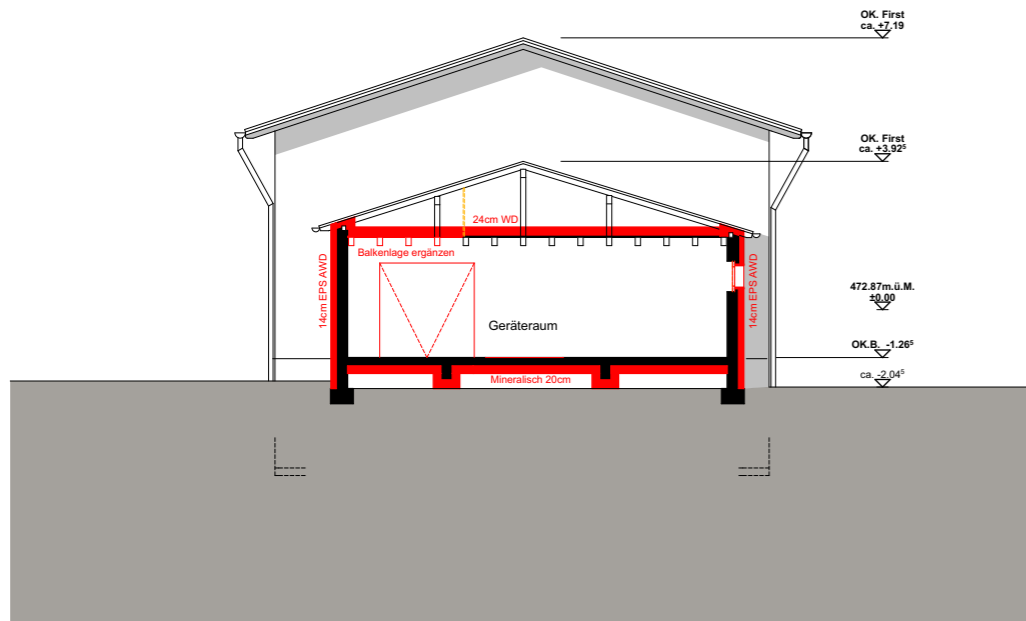




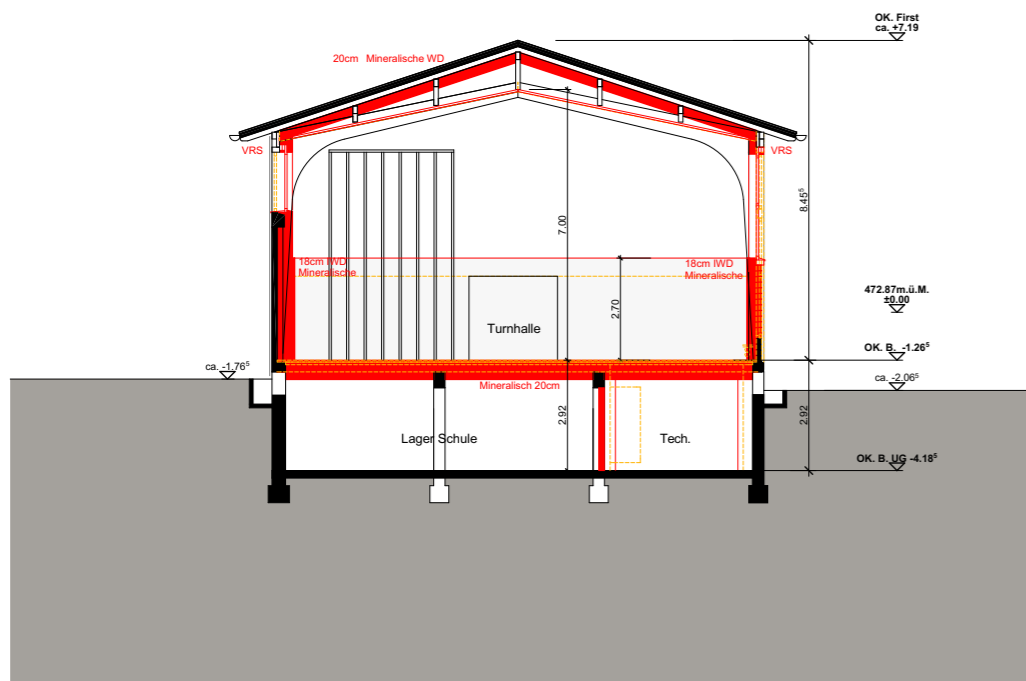




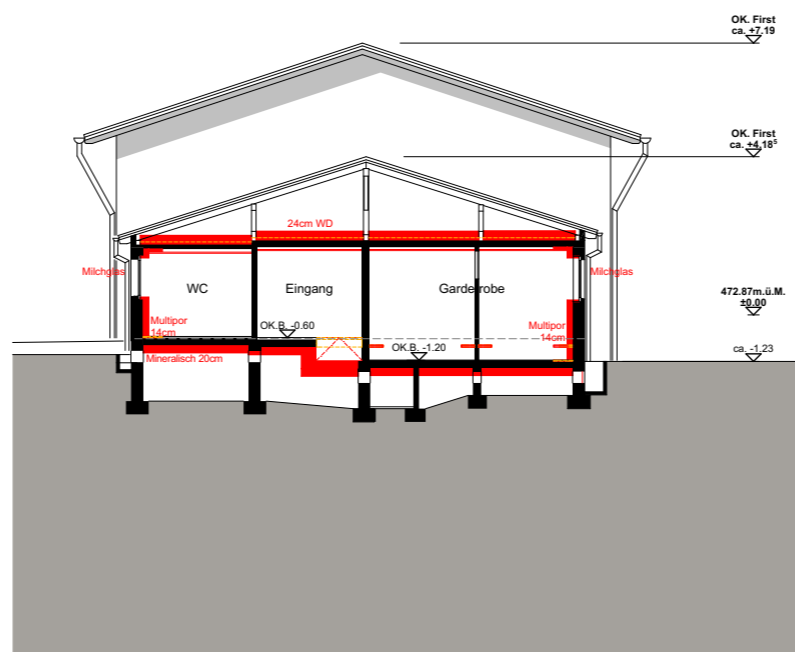




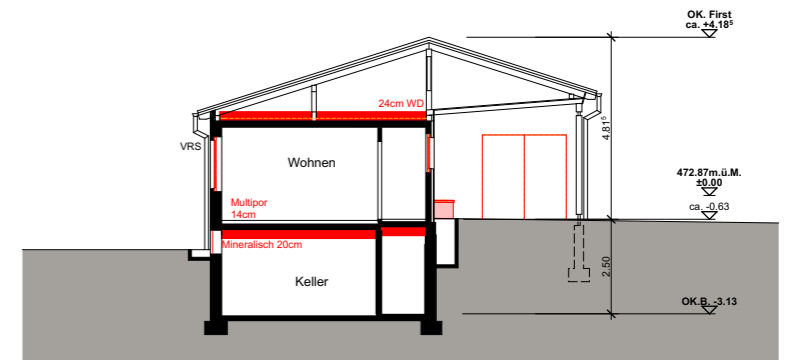
Schnitt T2



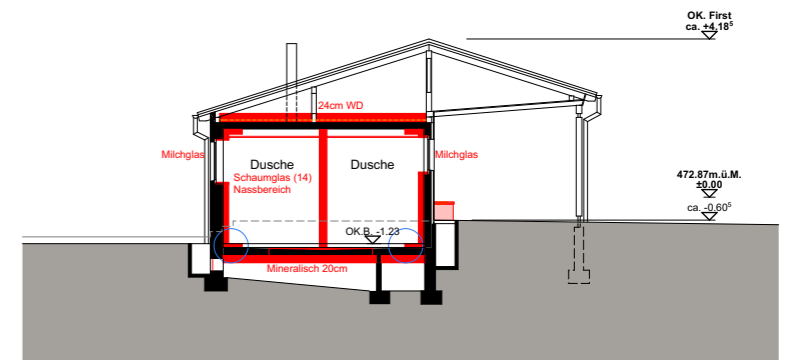
Schnitt T1



Schnitt Z3



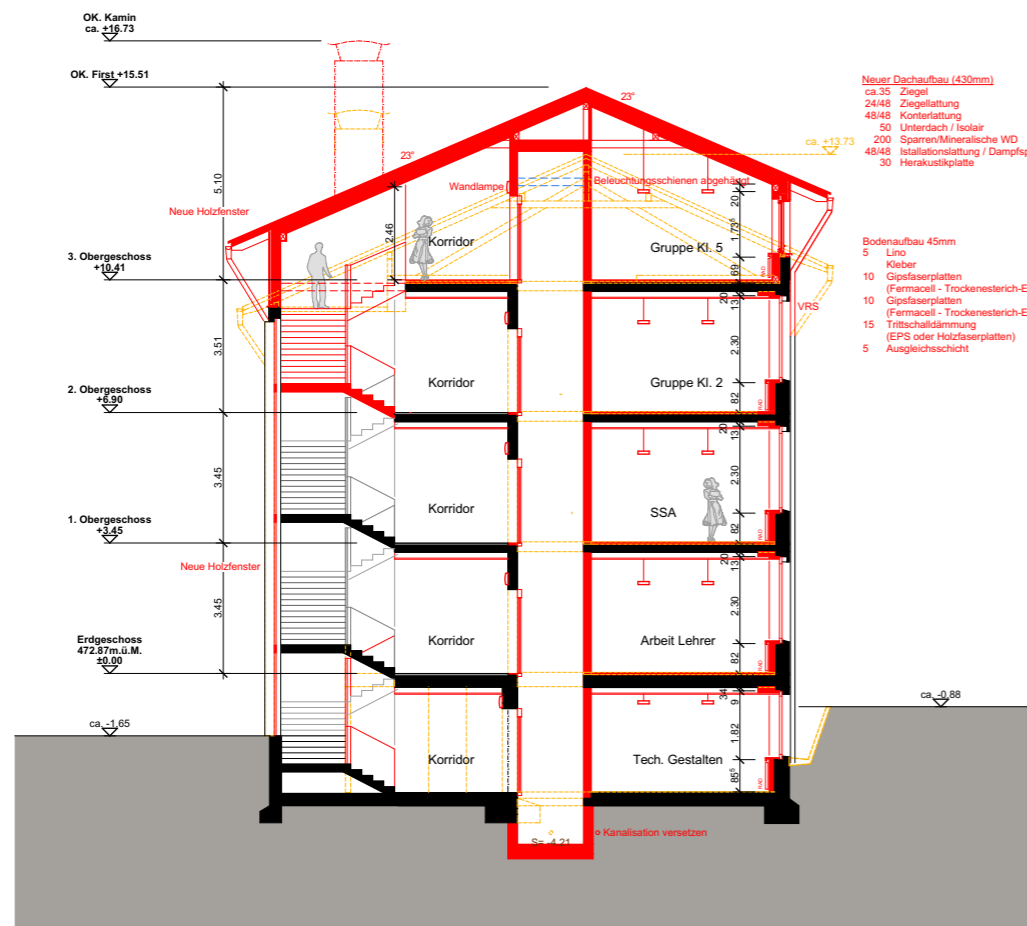
Schnitt Z1



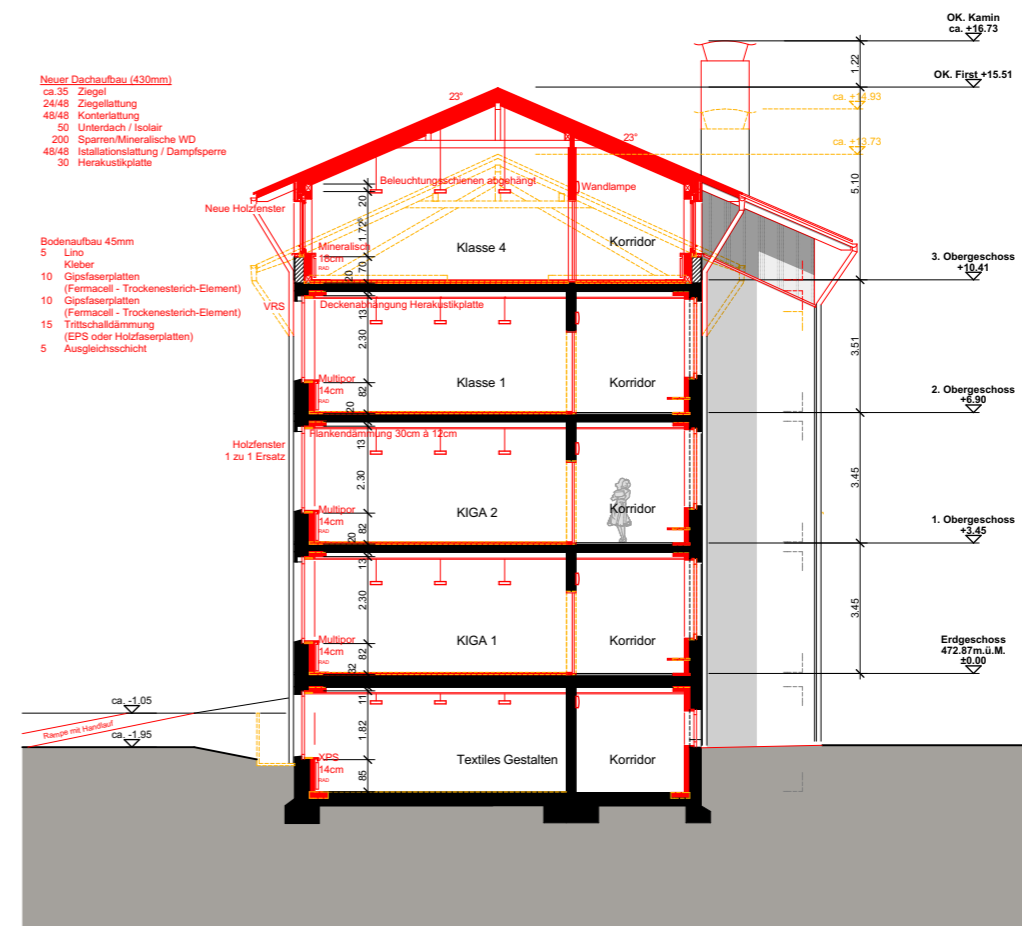
Schnitt Z2



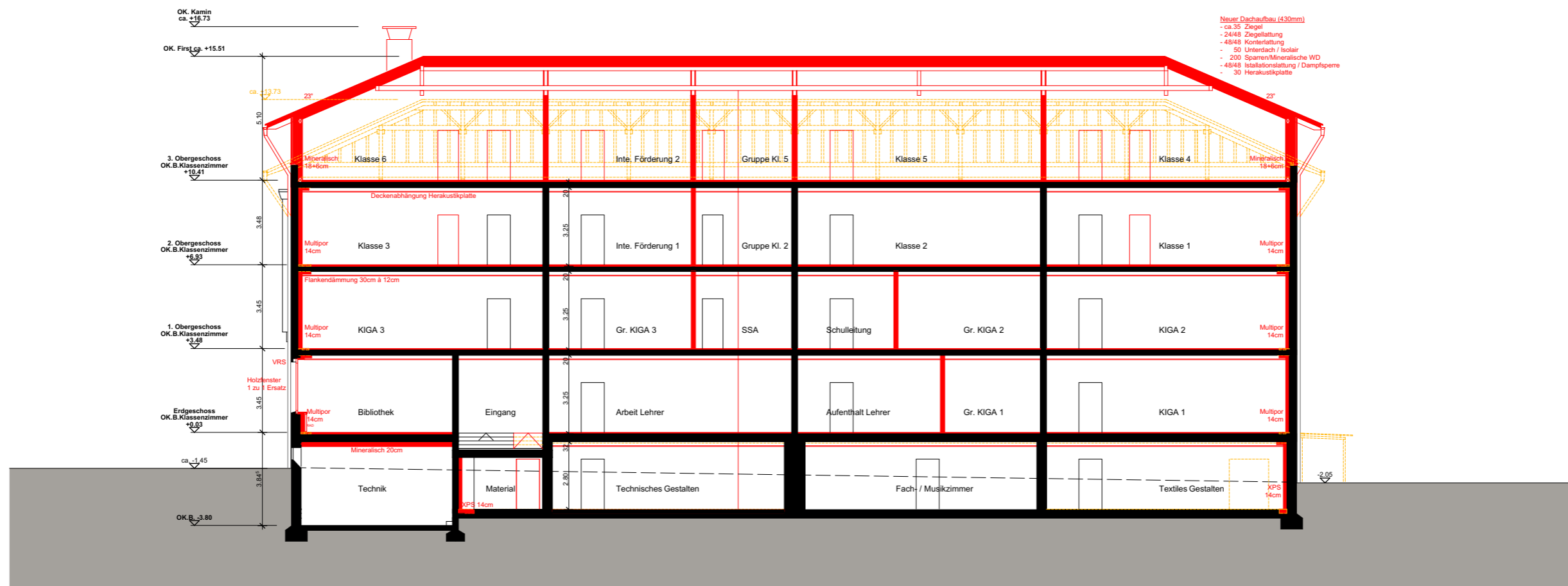




Schnitt S1



Schnitt S2

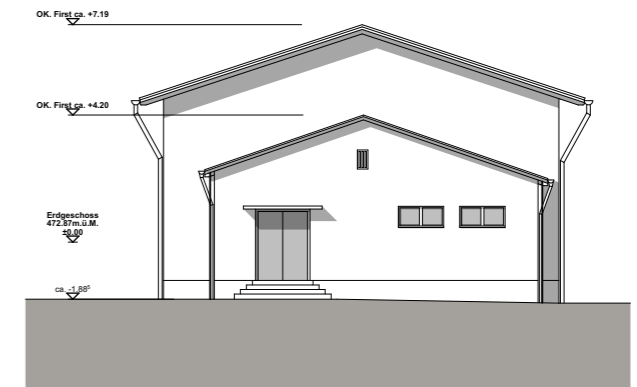


Schnitt S3





**Nordfassade**

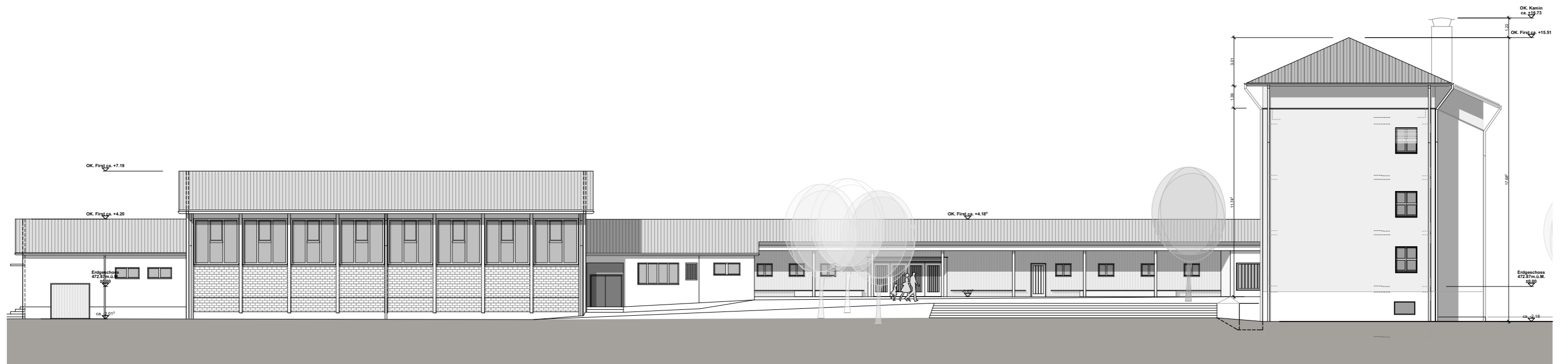


**Südfassade (Turnhalle)**

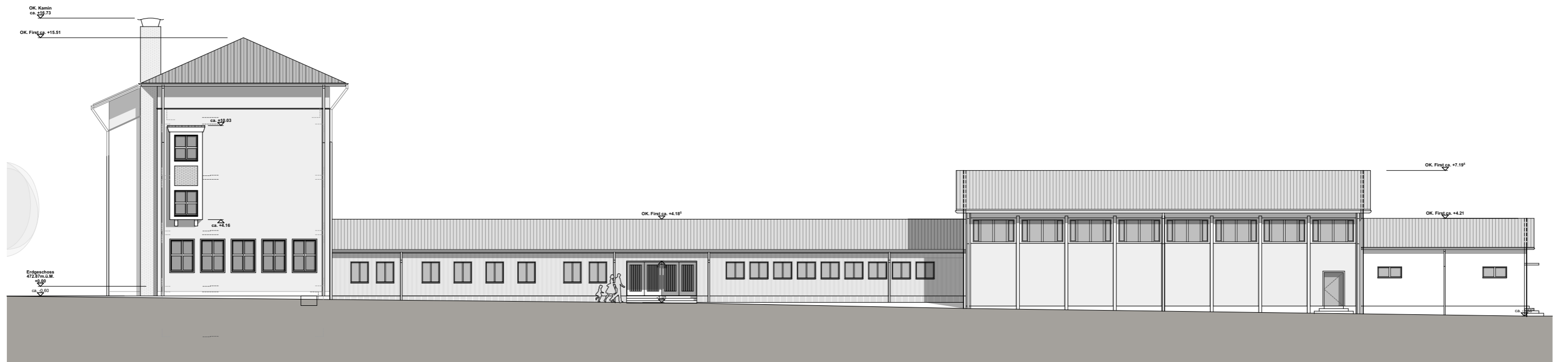


**Südfassade**





Ostfassade



Westfassade

