

Bebauungsplan Teiggi / Gemeindehaus / LUPK-Areal Kriens

Projektstand: 14. Juni 2010

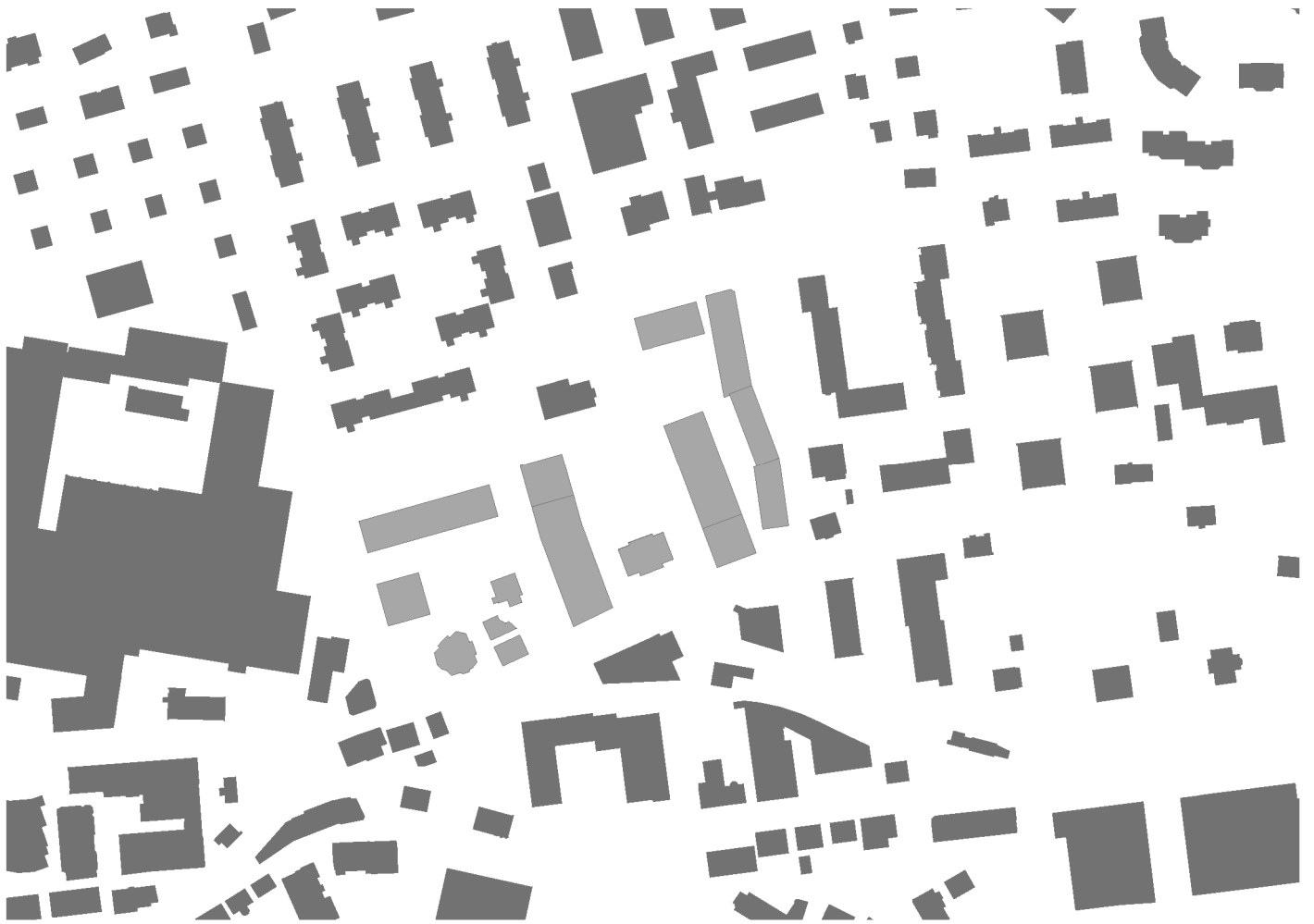
Anhang 1 zum Bebauungsplan Überarbeitung des Wettbewerbsprojekts



Inhaltsverzeichnis

1	Situation	3
1.1	Schwarzplan	3
1.2	Schema Aussenräume	4
1.3	Umgebung	5
2	LUKP Areal	6
2.1	Situation	6
2.2	Grundrisse, Schnitte und Ansichten	7
3	Gemeindehaus Areal	9
3.1	Situation	9
3.2	Grundrisse, Schnitte und Ansichten	10
4	Teiggi Areal	13
4.1	Situation	13
4.2	Grundrisse, Schnitte und Ansichten	14

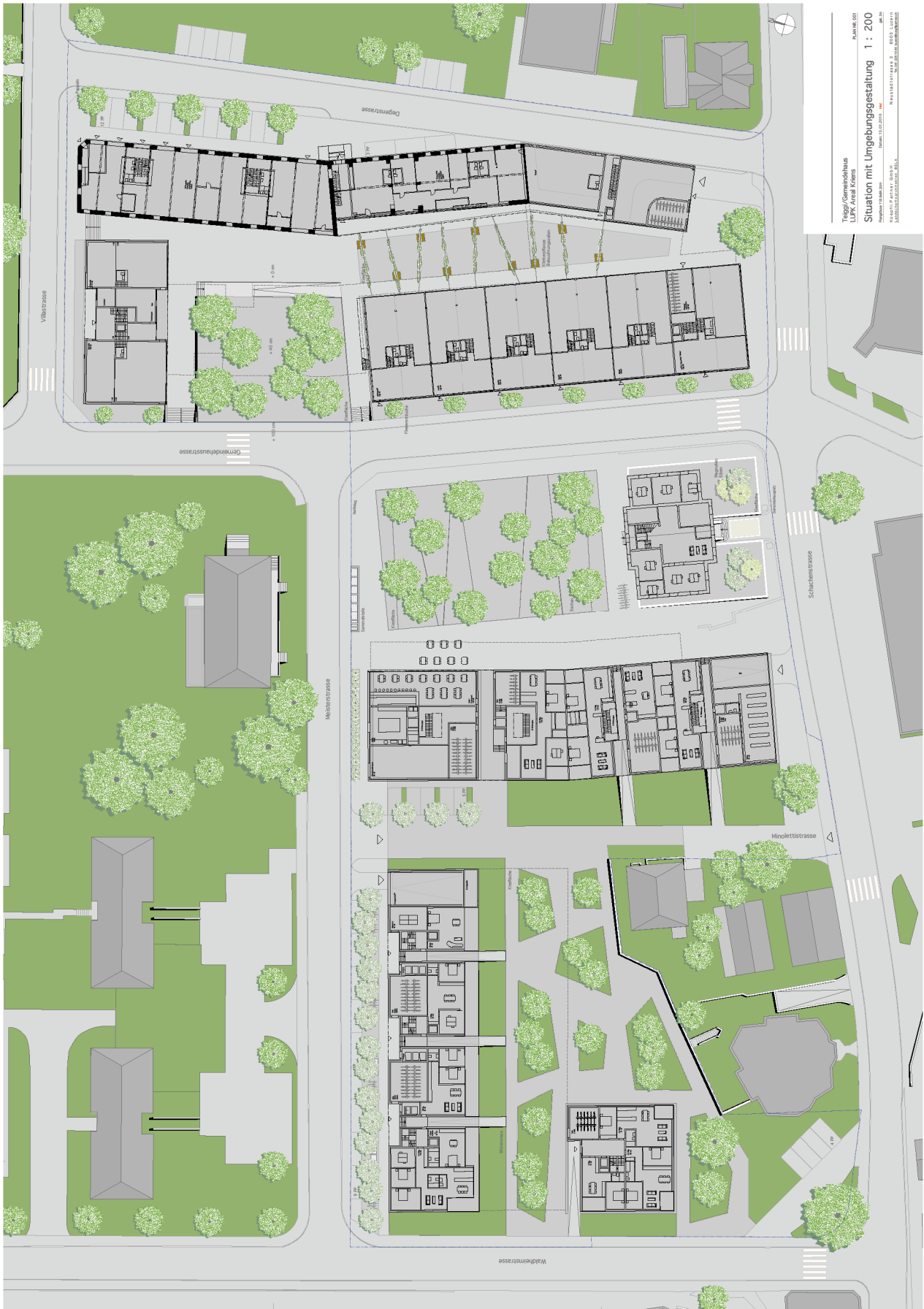
1 Situation
1.1 Schwarzplan



1.2 Schema Aussenräume



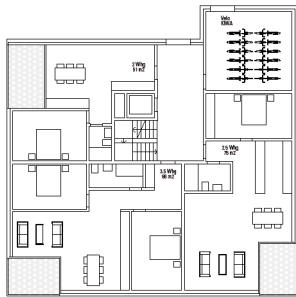
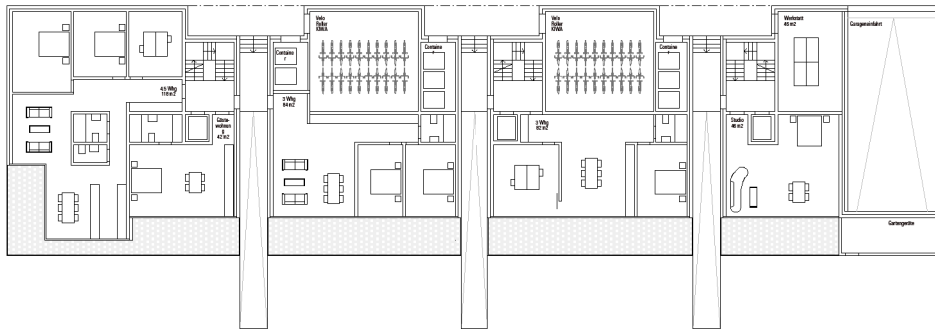
1.3 Umgebung 1:1'000



2 LUPK Areal
2.1 Situation 1:500



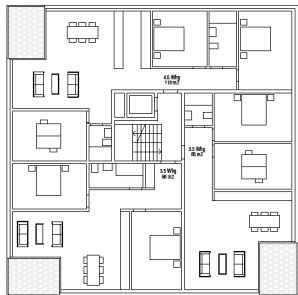
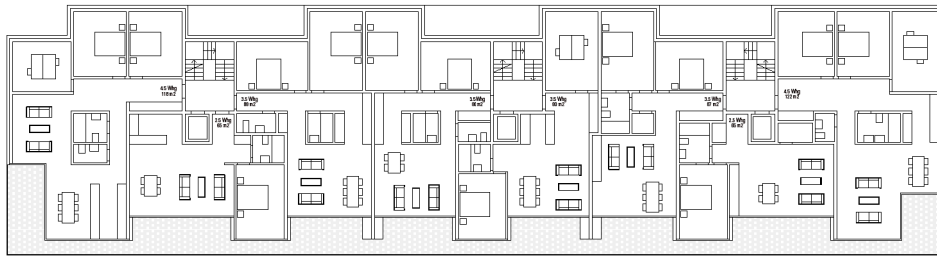
2.2 Grundrisse, Schnitt und Ansicht



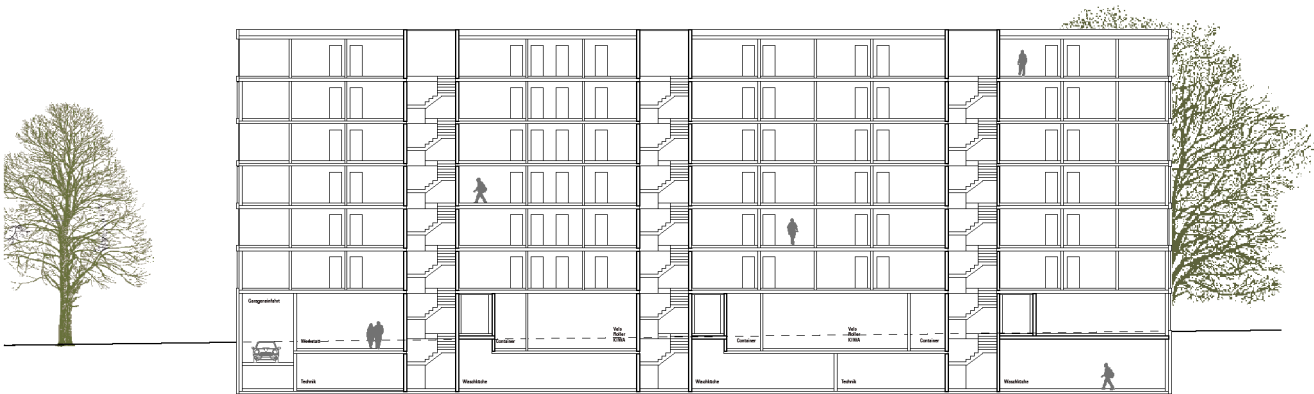
EG 1:500



UG 1:500

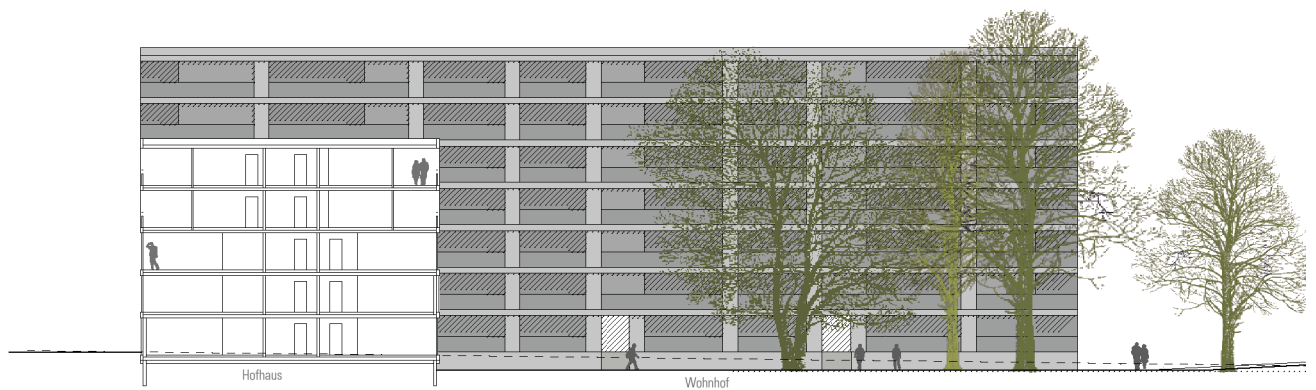


OGs 1:500



Wohnhaus an der Meisterstrasse

Schnitt 1:500



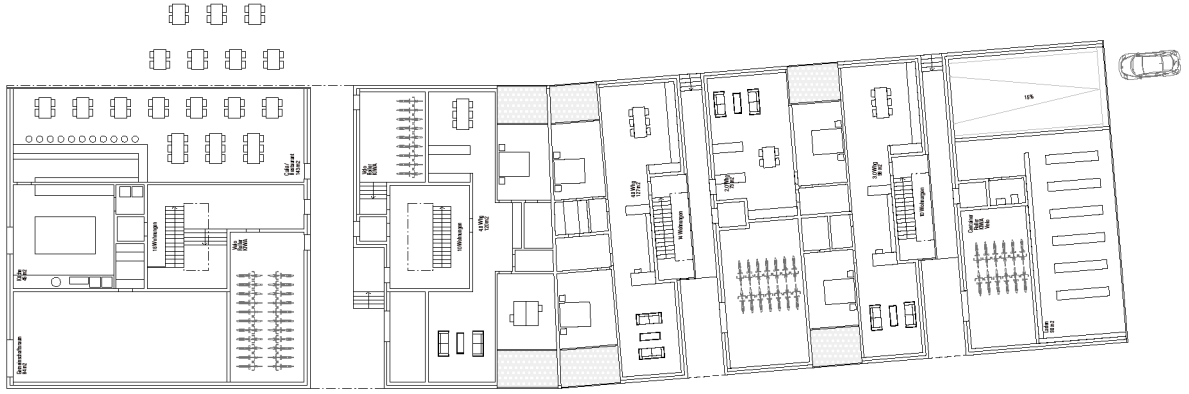
Südsansicht 1:500

3 Gemeindehaus Areal

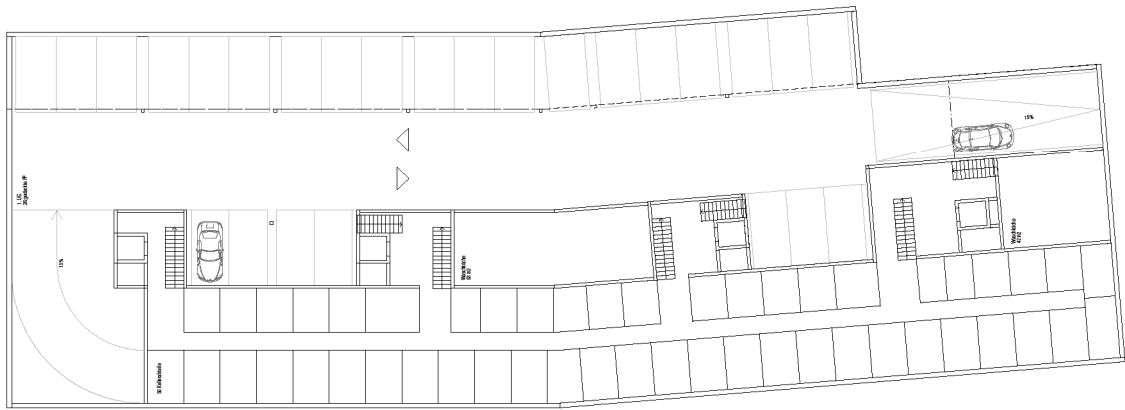
3.1 Situation 1:500



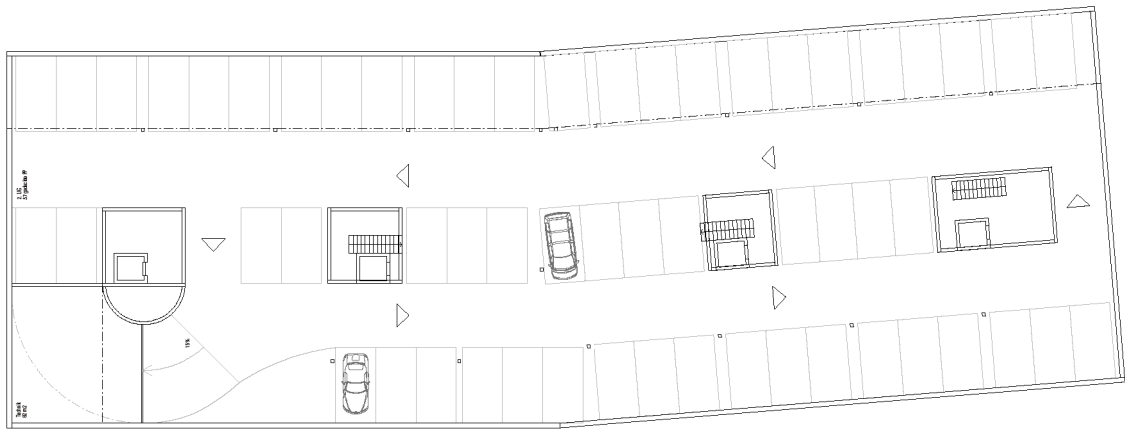
3.2 Grundrisse, Schnitt und Ansicht



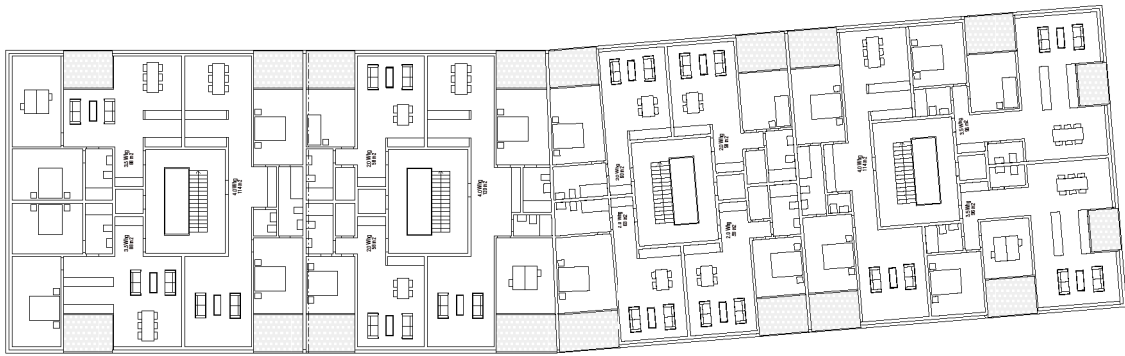
EG 1:500



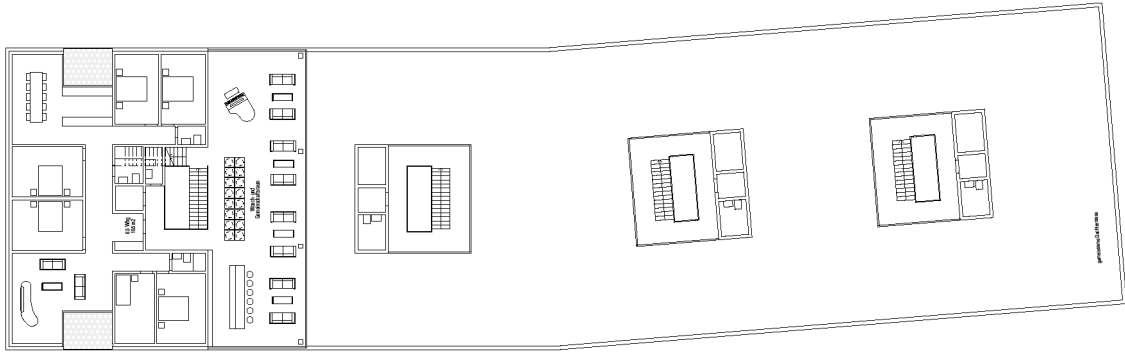
1. UG 1:500



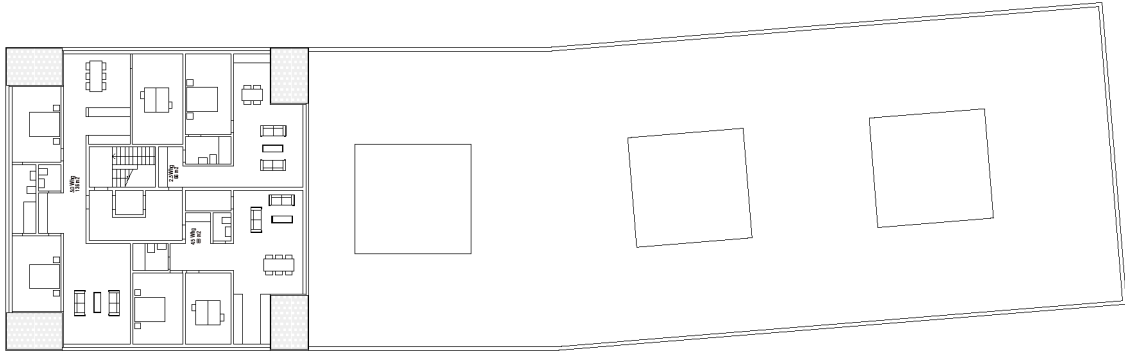
2. UG 1:500



1.-3. OG 1:500



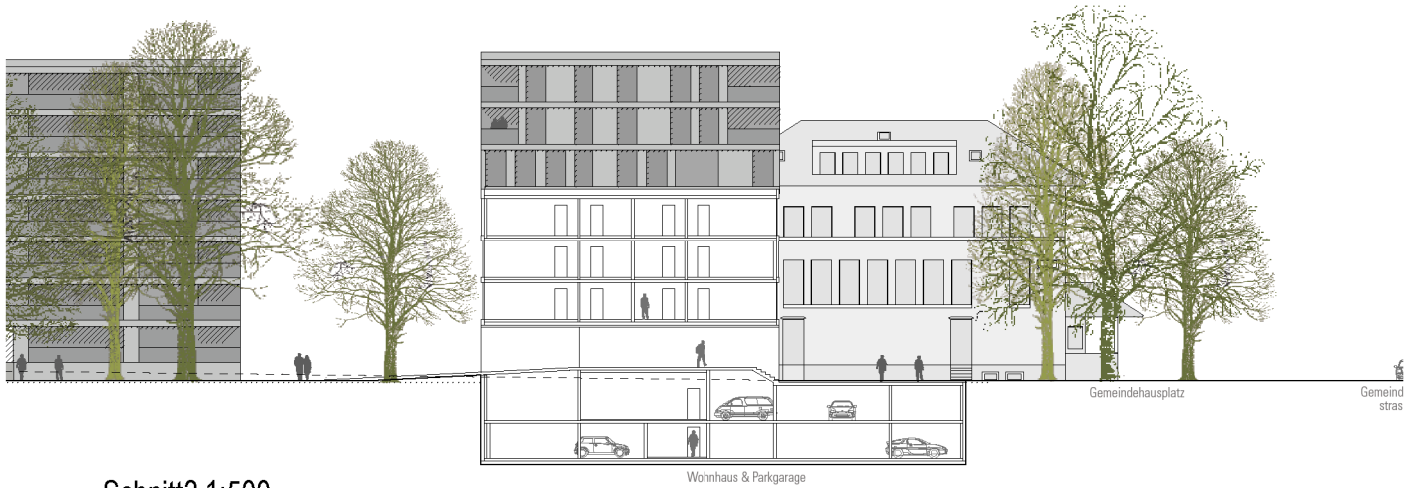
4. OG 1:500



5.-6. OG 1:500



Schnitt1 1:500



Schnitt2 1:500



Südansicht 1:500

4 Teiggi Areal

4.1 Situation 1:500



4.2 Grundrisse, Schnitt und Ansicht

